

» CARBIDE AND COATINGS

**CRUSHING  
MILLING  
PELLETIZING  
RECYCLING**

**Hard and strong performance.**



**DURIT**  
HARTMETALL



# » CARBIDE TECHNOLOGY

Parts, tools and components made of cemented carbide are **the ultimate in wear resistance and longevity** and **ensure utmost versatility**. DURIT carbide solutions stand up to the toughest demands.

## » DEDICATED TO CARBIDE

**Carbide from a single source**—from blanks to high-precision final products. DURIT produces **customized parts** and realizes **individual shapes** as well as **complex geometries**.

## » WE OFFER FULL-SERVICE CARBIDE

### HARDFACTS

#### » DURIT HARTMETALL

##### » SINCE 1982

Successful and solution-oriented

##### » OVER 500 EMPLOYEES

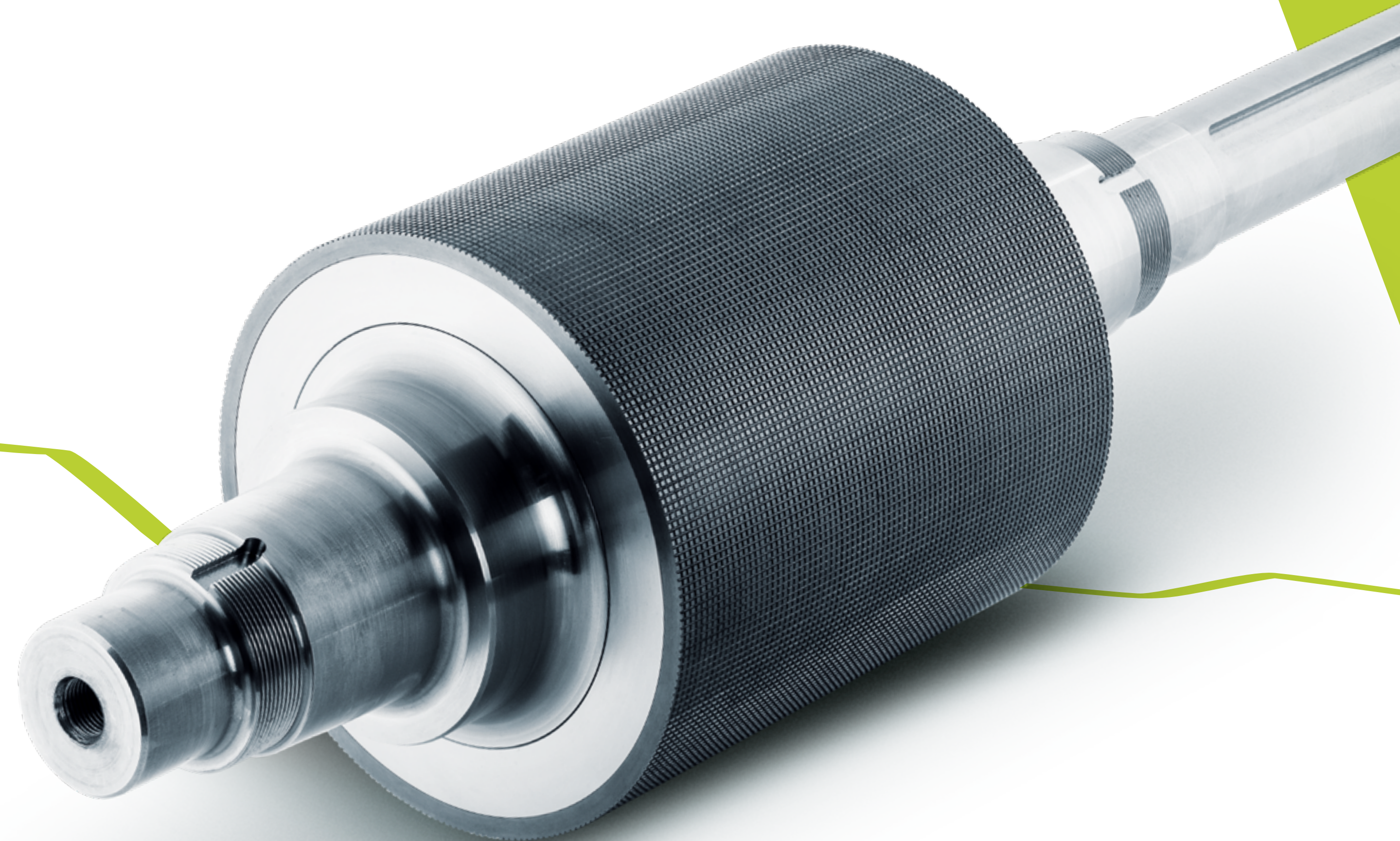
Worldwide

##### » MORE THAN 60 CARBIDE GRADES

For wear protection and metal forming

##### » 100% COATING EXPERTISE

HVOF, APS, EAWS,  
Laser Cladding, PVD and CVD





# » WEAR PROTECTION FOR CRUSHING, MILLING, PELLETIZING, RECYCLING

Crushing and milling hard recyclable materials puts extreme demands on tools, parts and components. In these applications, cemented carbide features a much higher break resistance than ceramics and **a much higher wear and pressure resistance than other materials.** DURIT creates first-class solutions for all requested applications.

## » WE SOLVE WEAR PROBLEMS

DURIT HARTMETALL has offered convincing solutions in the field of powder processing, pelletizing and recycling for years. The **durability of DURIT components** is also appreciated in industries that process secondary or natural materials.

## » WITHSTANDS MOST EXTREME DEMANDS



» [durit.com](http://durit.com)



### Products ::

grinding bowls · mill rings · millstones ·  
milling pins · milling discs · milling cones ·  
impact strips · impact feed · pestles ·  
blade strips · crusher rollers · crusher jaws  
and plates · sieve rings · linings · pins ·  
strippers · perforated plates

### Typical applications ::

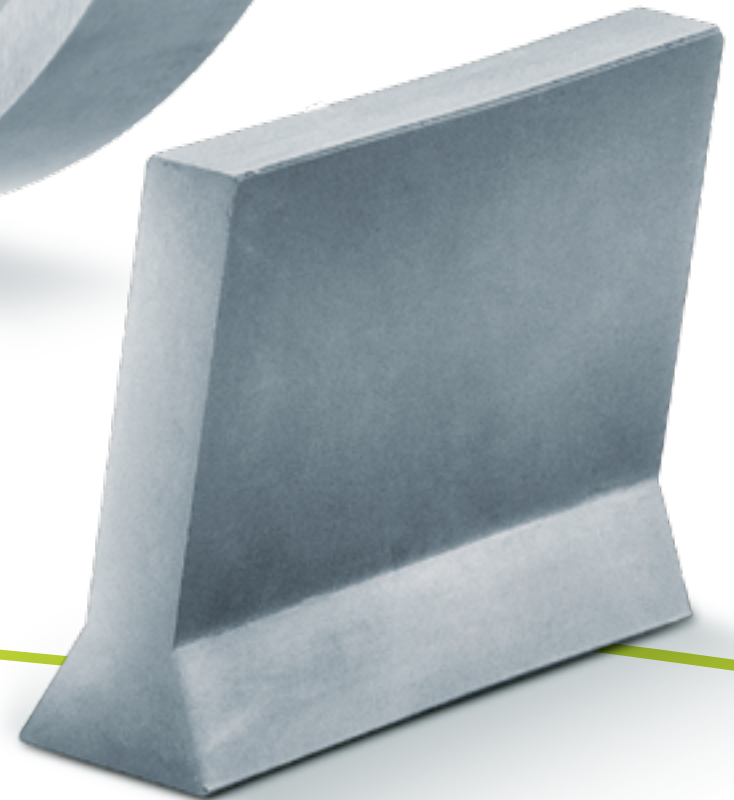
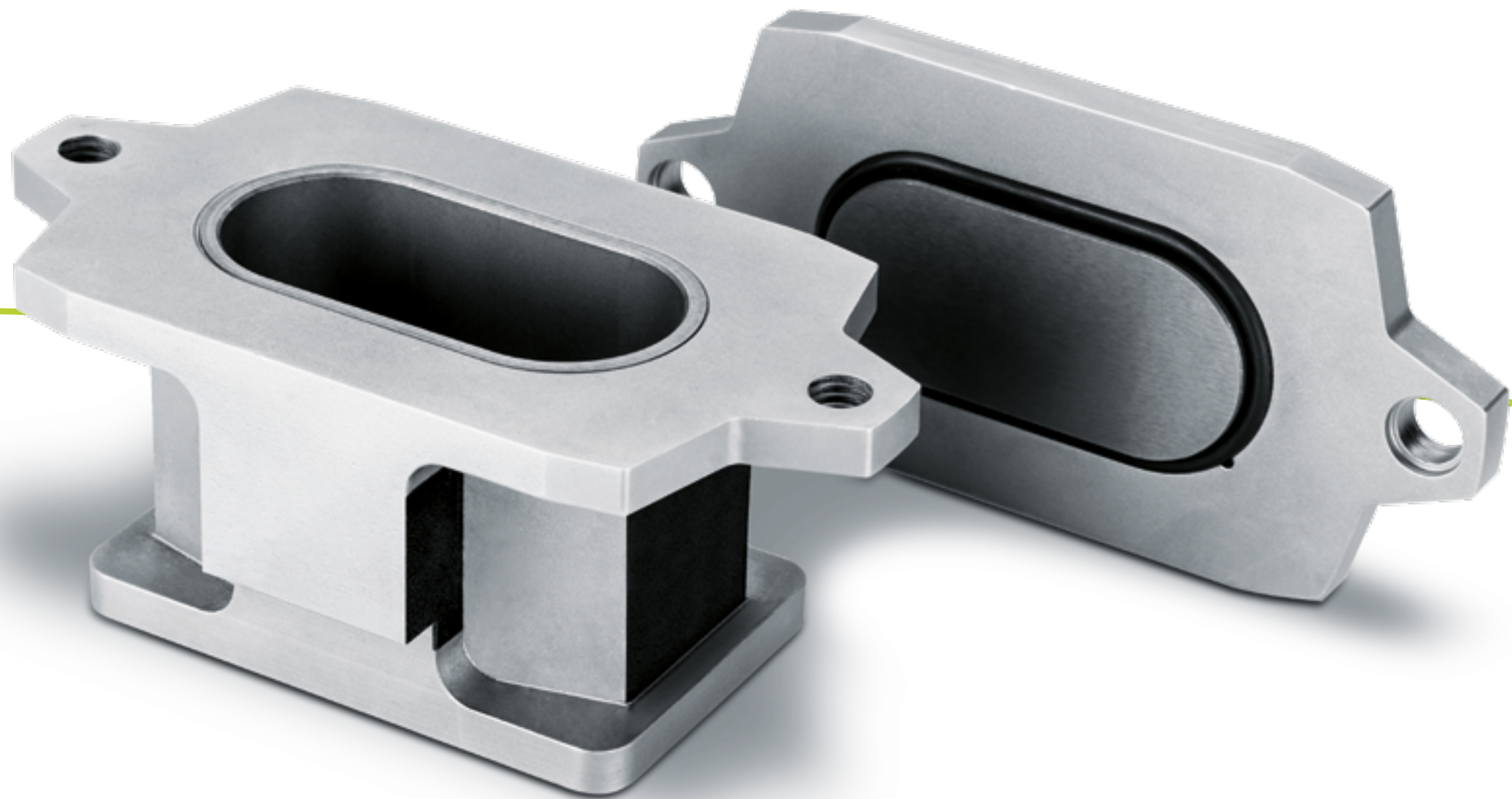
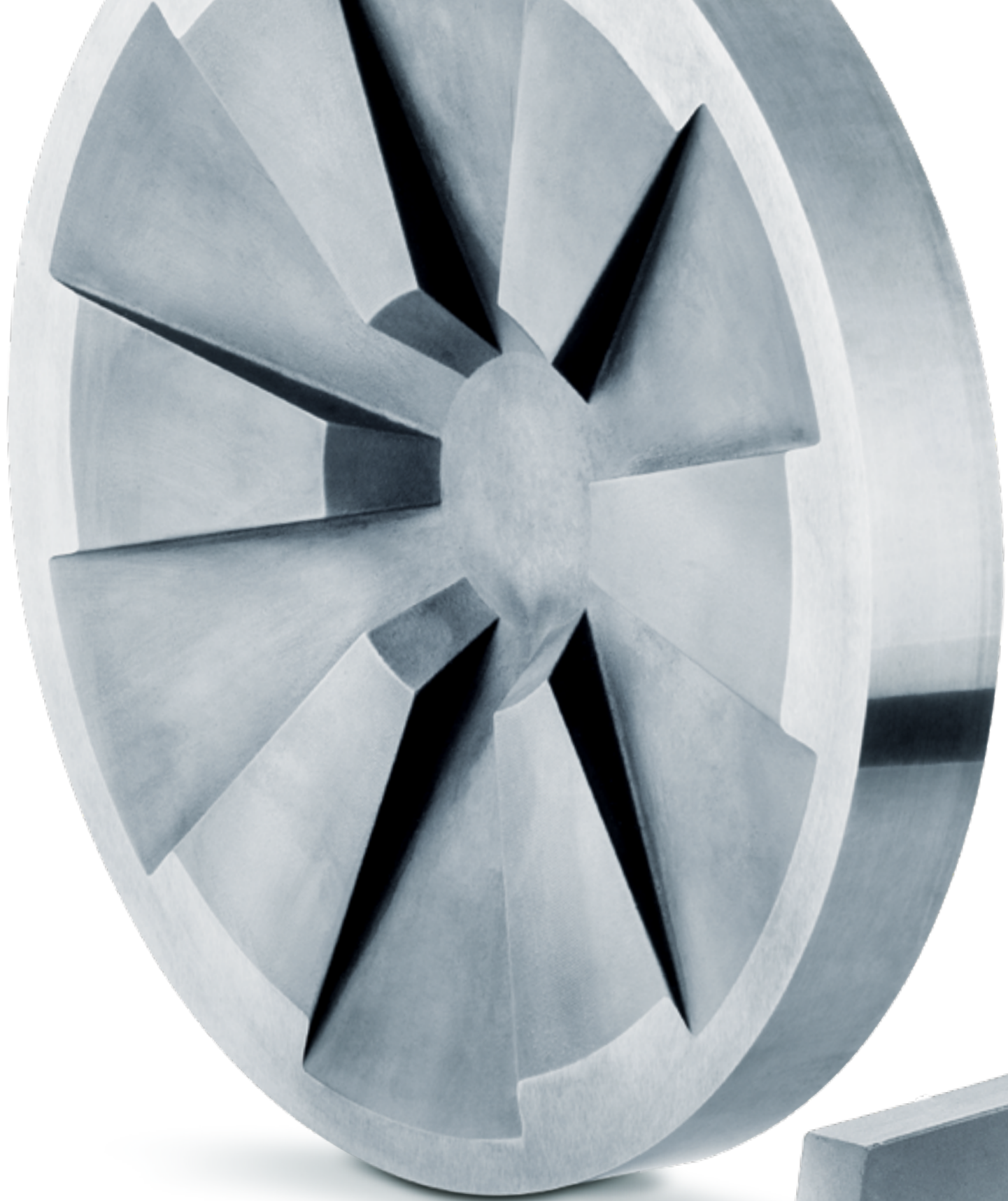
pin mills · laboratory mills · cone mills ·  
impact mills · hammer mills · shredders ·  
pelletizers · jaw crushers · roller crushers





**Selection of application-specific carbide grades ::**

<b>GRADE</b>	<b>Composition</b>	<b>Binder (%)</b>	<b>Grain size</b>	<b>Hardness (HV30)</b>	<b>Fracture toughness (MPa·m<sup>1/2</sup>)</b>
GD08F	WC-Co	8,00	submicron	1625	10
GD13F	WC-Co	10,00	submicron	1540	12
GD10	WC-Co	6,00	medium	1600	10
GD20	WC-Co	10,00	medium	1350	15
GD30	WC-Co	15,00	medium	1150	15,5
BD05	WC-Co	6,00	coarse	1450	15
BD10	WC-Co	9,00	coarse	1250	16
BD20	WC-Co	10,00	coarse	1215	19





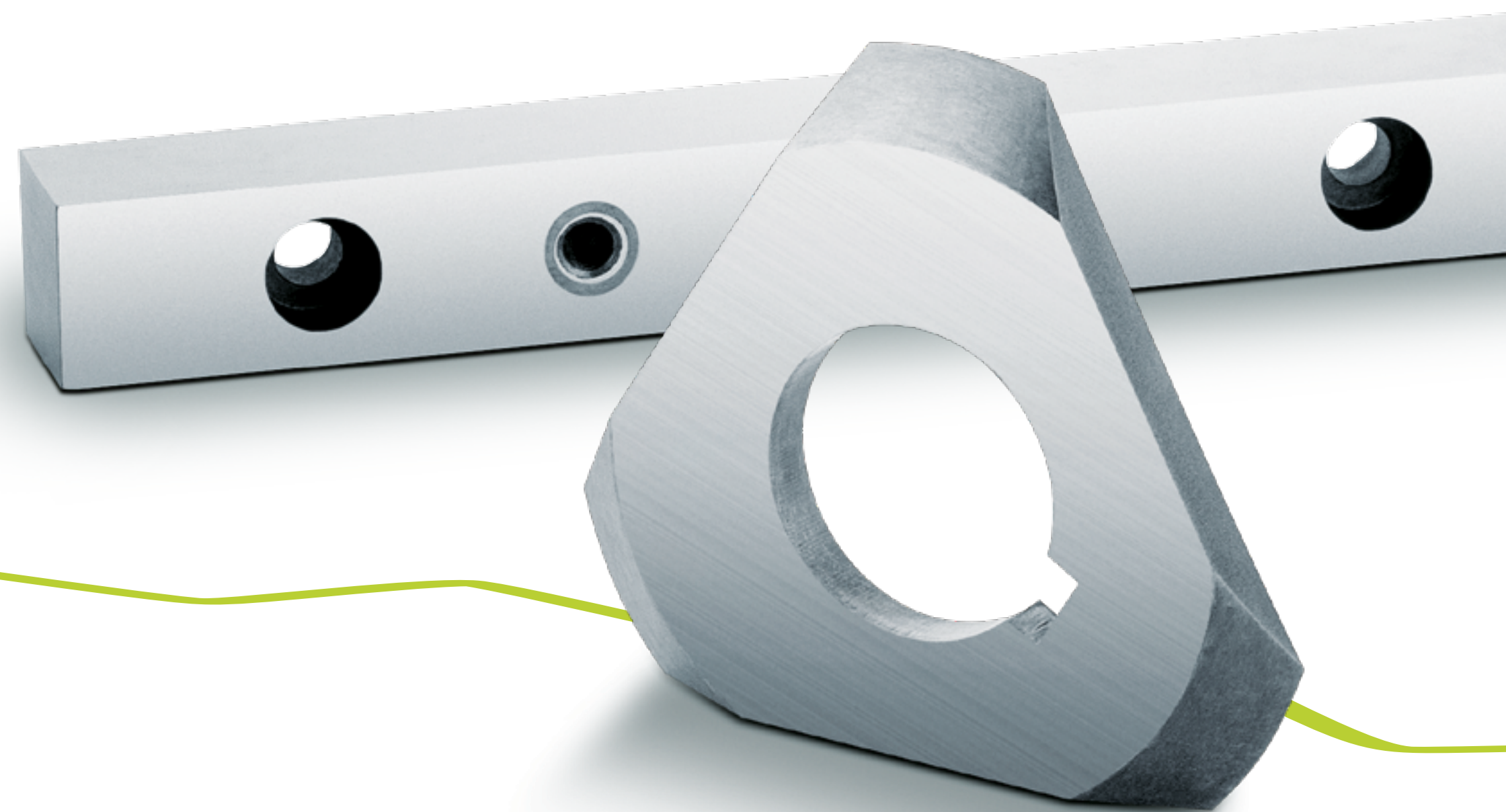
# » DURIT QUALITY REPRESENTS BEST RESULTS

As one of few **complete suppliers in the market**, DURIT offers an all-encompassing concept from consultation, development and design, all the way to production of highly accurate components.

## » CARBIDE FROM A SINGLE SOURCE

Our products are designed with a focus on **dimensional accuracy, continuity** and **value enhancement**. Therefore, all our production sites are equipped with state-of-the-art technology. In particular, we attach great importance to our **process-oriented quality management**.

## » QUALITY AND ADDED VALUE THROUGH CERTIFIED PROCESSES



» [durit.com](http://durit.com)







» DURIT HARTMETALL GMBH

Linderhauser Straße 139  
D-42279 Wuppertal  
Germany  
T +49 202 55 109 0  
F +49 202 55 109 25  
info@durit.de

[durit.com](http://durit.com)

**takes you to EXTREMES**

